

SR 78 Corridor Improvements

I-15/SR 78 Managed Lanes Connector and Woodland Interchange Project

Project Overview

The I-15/SR 78 Managed Lanes Connector and Woodland Interchange project is a collaborative effort between Caltrans, SANDAG, and the City of San Marcos to build new direct connector ramps between the existing I-15 Express Lanes and three miles of newly proposed Express Lanes on SR 78. An Express Lane, sometimes referred to as a High-Occupancy/Toll (HOT) Lane, is a type of Managed Lane that helps manage congestion by prioritizing carpool, vanpool, and public transit. Express Lanes may also be available for solo drivers who pay a fee.

Residential and economic growth along the east/west SR 78 corridor in the cities of Escondido and San Marcos has strained connections to and from I-15, a major north-south managed lanes system in San Diego County. This strain often results in increased traffic congestion and travel delays for residents and commuters. By extending the existing express lanes on I-15 and adding new direct connectors, the project would help improve connectivity and travel times, increase access to homes and jobs, and enhance the overall quality of life for residents and visitors in North San Diego County.

Project Schedule



Project Features

The I-15/SR 78 Managed Lanes Connector and Woodland Interchange Project would:

- » Build direct connectors between I-15 and SR 78
- » Extend three miles of Express Lanes in each direction on SR 78 between the I-15/SR 78 interchange and San Marcos Boulevard
- » Add an eastbound auxiliary lane between Nordahl Road and I-15
- » Add a westbound auxiliary lane between Nordahl Road and Woodland Parkway/Barham Drive
- » Relocate the eastbound SR 78 on-ramp from Barham Drive
- » Widen and realign Barham Drive from La Moree Road to Woodland Parkway
- » Enhance the Woodland Parkway undercrossing
- » Construct a bike facility on Barham Drive/Woodland Parkway

Project Benefits

The I-15/SR 78 Managed Lanes Connector and Woodland Interchange Project will benefit commuters, residents, and businesses by:

- » Providing a reliable transportation option that shortens travel times, encourages multi-occupant vehicle travel, and reduces greenhouse gas emissions
- » Improving access to key residential and employment centers
- » Supporting state and regional goals to move more people while reducing total number of vehicle miles traveled

Project Status

The I-15/SR 78 Managed Lanes Connector and Woodland Interchange Project is currently in the environmental review process. The Draft Environmental Document (DED) is expected to be released for public review and comment in mid-2025 and a Final Environmental Document is anticipated to be released in summer 2026.

To stay up to date with SR 78 projects, please visit [SANDAG.org/subscribe](https://sandag.org/subscribe) to sign up for updates.

Project Cost

The project is estimated to cost approximately \$490 million.

For More Information

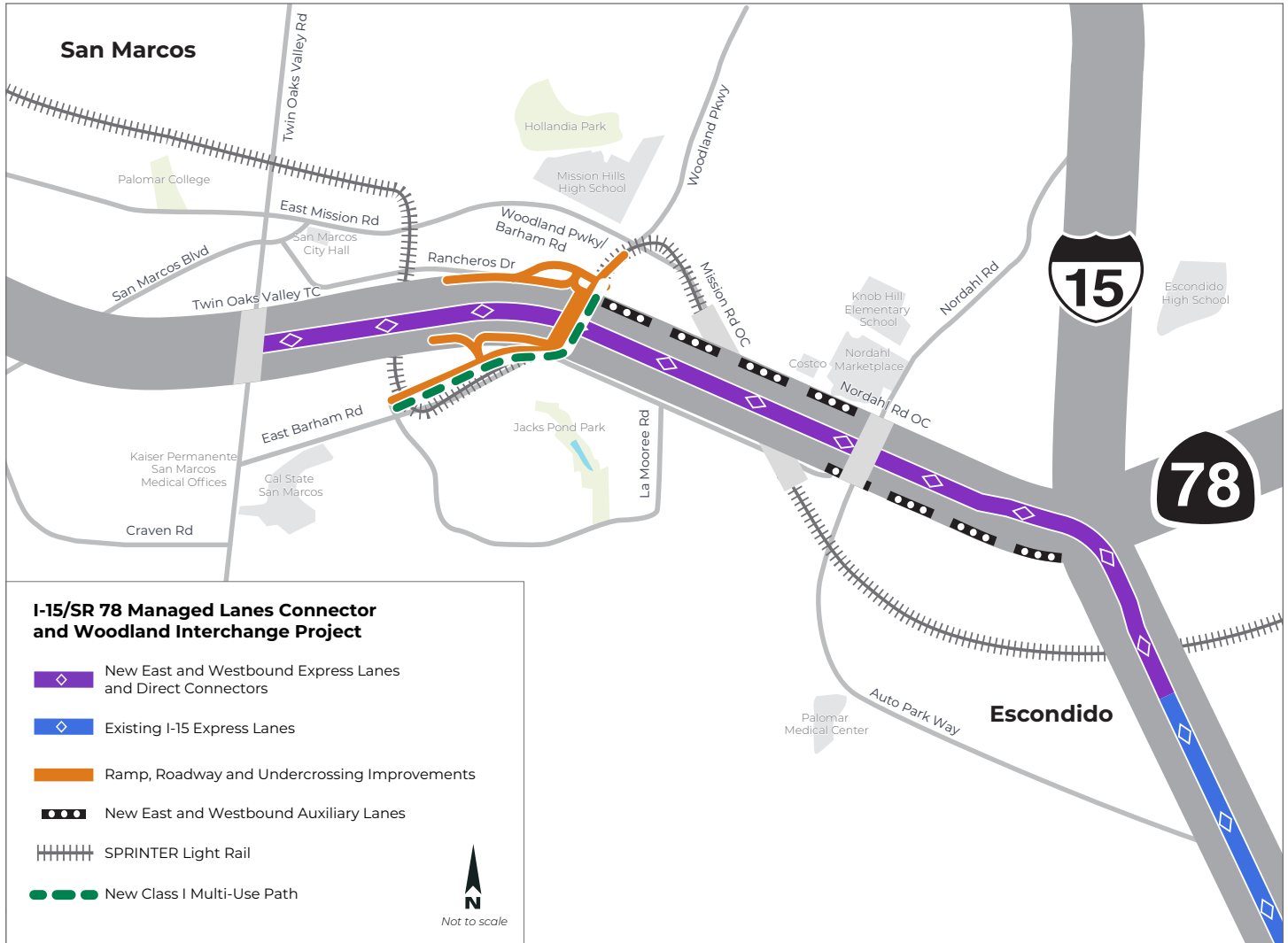
Visit [SANDAG.org/i15sr78](https://sandag.org/i15sr78)

Call 888.547.1161

Email sr78@sandag.org

SR 78 Corridor Improvements

I-15/SR 78 Managed Lanes Connector and Woodland Interchange Project



Free Language Assistance | Ayuda gratuita con el idioma | Librenang Tulong sa Wika | Hỗ trợ ngôn ngữ miễn phí
 免費語言協助 | 免費語言協助 | مساعدة ترجمة مجانية | 무료 언어 지원 | کمک زبان رایگان | 無料の言語支援 | Бесплатная языковая помощь
 Assistência linguística gratuita | मुफ्त भाषा सहायता | Assistance linguistique gratuite | ជំនួយភាសាឥតគិតថ្លៃ
 ఉచిత భాషా సహాయం | ການຊ່ວຍເຫຼືອດ້ານພາສາພິທີ | Kaalmada Luqadda ee Bilaashka ah | Безкоштовна мовна допомога

SANDAG.org/languageassistance | 619.699.1900

