



# LOCAL PROGRAMS

**ERWIN GOJUANGCO**  
District Local Assistance Engineer



# OVERVIEW

- ❖ Purpose
- ❖ Functions
- ❖ Customers and Partners
- ❖ Roles and Responsibilities
- ❖ Programs
- ❖ Organization
- ❖ Supporting Technology
- ❖ Summary



# PURPOSE

**Assist Local and Regional Agencies in improving transportation infrastructure by ensuring:**

- ❖ **Specific program requirements are met**
- ❖ **Project applications are processed**
- ❖ **Projects are delivered in accordance with Federal and State requirements**

# FOUR FUNCTIONS

- ❖ **Funds Management**
- ❖ **Program Management**
  - Planning
  - Programming
  - Monitoring
  - Evaluating
- ❖ **Project Implementation**
- ❖ **Local Program Support**



# CUSTOMERS & PARTNERS

## ❖ GRANTORS

Federal Government (FHWA)

State Government

## ❖ RECIPIENTS

Local Agencies (27)

Metropolitan Planning Organizations

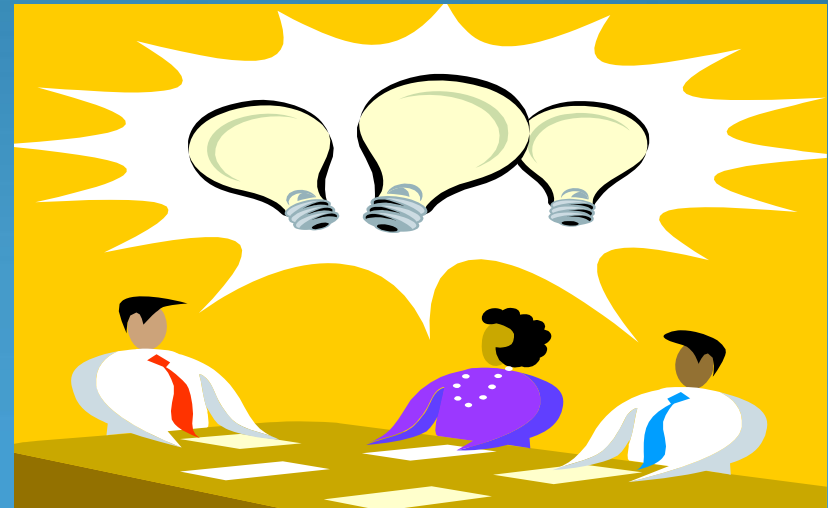
JPAs

Non-Government / Non-Profit Organizations



# CUSTOMERS & PARTNERS

- ❖ Division of Local Assistance
- ❖ Office of Special Funded Projects &  
Structure Local Assistance
- ❖ Local Programs Accounting
- ❖ Environmental
- ❖ Right-of-Way



# ROLES and RESPONSIBILITIES



U.S. Department of Transportation  
**Federal Highway Administration**

**Overall authority and responsibility for implementing and monitoring federal laws, regulations and executive orders.**



**Responsible to FHWA for successful implementation of federal-aid programs and projects.**

**Administers the implementation of state funded programs and projects for the CTC and State Legislature.**

# ROLES and RESPONSIBILITIES



## METROPOLITAN PLANNING ORGANIZATIONS, REGIONAL TRANSPORTATION PLANNING AGENCIES

Responsible for providing each local agency with their application rules, procedures and timelines.



## CITY, COUNTY, and OTHER LOCAL AGENCIES

Have the primary responsibility for implementing the specific projects which carry out the programs.



# FEDERAL PROGRAMS

*FHWA is the federal agency most typically involved in the transportation projects. Caltrans has the ultimate responsibility to ensure that local agencies are administering the federal-aid program in conformance with federal requirements.*

## ❖ HBP - Highway Bridge Program

88.53% Federal funds; Replace or rehabilitate public highway bridges.

## ❖ TE - Transportation Enhancement

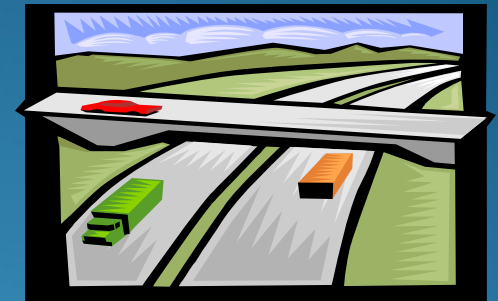
88.53% Federal funds; Enhance transportation experience and quality of life

## ❖ RSTP - Regional Surface Transportation Program

Construction, reconstruction, rehabilitation, resurfacing, restoration and operational improvements for highway and bridge projects.

## ❖ CMAQ - Congestion Mitigation and Air Quality

88.53% Federal funds for most California projects; Attain or maintain the National Ambient Air Quality Standards (NAAQS) for ozone and carbon monoxide



# FEDERAL PROGRAMS

## ❖ HSIP – Highway Safety Improvement Program

90% Federal funds  
Safety improvements on public roads

## ❖ HR3 – High Risk Rural Roads Program

90% Federally funded Roads that are classified as rural major and minor collectors

## ❖ SRTS - Safe Routes To School

100% Federal funds  
Stand-alone infrastructure or non-infrastructure projects

## ❖ ER – Emergency Relief

\$100 million Federal funds per State per disaster.

Repair and reconstruction of FHWA highways on Federal lands which have been damaged by natural disaster.



# FEDERAL PROGRAMS

- ❖ **TCRP - Traffic Congestion Relief Act Exchange Program**  
Increase flexibility in using state and federal funding  
  
Complete transportation improvements without compromising other state funded projects or activities
- ❖ **DF - Discretionary Funds**  
Include High Priority Projects, Ferry Boat Discretionary, Federal Lands Highway Program, and Transportation and Community and System Preservation Pilot Program (TCSP) programs.  
These funds may only be used for the designated purpose (line item description), as authorized by Congress or FHWA.
- ❖ **ITS – Intelligent Transportation System**  
Federal-aid projects focused on electronics, communications, or IT processing, applied to transportation operations

# STATE PROGRAMS

*Developed in accordance with policy and procedure as specified in state law, by the CTC, and Caltrans.*

## ❖ **BTA - Bicycle Transportation Account**

\$7.2 million of state funds a year

Serve the functional needs of bicycle commuters

## ❖ **EEM - Environmental Enhancement and Mitigation**

State grants \$10 million annually on transportation facility projects with environmental impact

## ❖ **SR2S - Safe Routes To School**

90% State funds

Improve conditions for children in kindergarten through twelfth grade, to safely walk and bike to school

# STATE PROGRAMS

## ❖ Proposition 1B – Transportation Bond Program

- **CORRIDOR MOBILITY IMPROVEMENT ACCOUNT (CMIA)**
- **STATE ROUTE 99 CORRIDOR**
- **TRADE CORRIDOR IMPROVEMENT FUND**
- **STIP AUGMENTATION**
- **PUBLIC TRANSPORTATION MODERNIZATION, IMPROVEMENT, and SERVICE ENHANCEMENT ACCOUNT**
- **INTERCITY RAIL IMPROVEMENT**
- **LOCAL BRIDGE SEISMIC RETROFIT ACCOUNT**
- **HIGHWAY-RAILROAD CROSSING SAFETY ACCOUNT**
- **TRAFFIC LIGHT SYNCHRONIZATION (TLSP)**
- **STATE-LOCAL PARTNERSHIP PROGRAM ACCOUNT (SLPP)**
- **LOCAL STREETS and ROADS, CONGESTION RELIEF, & TRAFFIC SAFETY ACCOUNT OF 2006**

# LAPSING FUNDS

- ❖ **Appropriations are available for one specific time period or one fiscal year**
- ❖ **Appropriations expire or lapse on June 30<sup>th</sup> of a fiscal year**
- ❖ **All charges against appropriations that will lapse on June 30<sup>th</sup> of each year must be processed by State Controller's Office**



# DISADVANTAGED BUSINESS ENTERPRISE (DBE)



❖ NICKIE HAYNES - DBE COORDINATOR

❖ Pursuant to 49 Code of Federal Regulations Part 26 (49 CFR 26).

US DOT requires that recipients of federal funding assistance of at least \$1.00 establish a Disadvantaged Business Enterprise Program

❖ Effective June 2, 2009, Caltrans implemented a Race Conscious DBE program.



# PUBLICATIONS

## ❖ Local Assistance Procedure Manual (LAPM)

Describes the processes, procedures, documents, authorizations, approvals and certifications, which are required in order to receive federal-aid and/or state funds for many types of local transportation projects.

## ❖ Local Assistance Program Guidelines (LAPG)

Provides local project sponsors with a complete description of the federal and state programs available for financing local public transportation-related facilities.

## ❖ Local Programs Procedures (LPP)

Used for the rapid deployment of new procedures and policies between updates of local assistance manual and guidelines.



# **CALTRANS LOCAL PROGRAMS ORGANIZATION**

- **Laurie Berman – District Director**
- **Ross Cather – Deputy District Director, PPM**
- **Denix Anbiah – Chief, Division of Local Assistance**
- **Erwin Gojuangco – District Local Assistance  
Engineer (DLAE)**

# SUPPORTING TECHNOLOGY

## ❖ LP 2000

- ✓ Processes Local Assistance project information
- ✓ Tracks and reports new state requirements
- ✓ Links to affiliated Caltrans systems

## ❖ FileMaker Pro Databases

- ✓ Track information at a program level
- ✓ No link for the district databases with HQ

## ❖ Federal Aid Databases (FADS)

- ✓ Owned by Budgets Program Federal Resources Office
- ✓ Does not link to LP2000 or FileMaker Pro databases
- ✓ Link between Caltrans and FHWA's system Fiscal Management Information System (FMIS)



# QUESTIONS???

**CALTRANS...**

*We're here  
to get you there.*

